



ESPACE 14

— LASER —

SUPER PULSE CO2 Expert 30W

ESPACE 14

LASER

Surgical Laser

The many advantages of surgical lasers allow them to be naturally in the therapeutics gear of daily dental treatment, dental implantology and periodontology.

From biostimulation to peri-implantite treatment, from asepsis to implants uncovering... More than 70 operating protocols in oral treatment.



30W SUPER PULSE EXPERT CO2 LASER

Specialist in soft tissue surgery

SOFT TISSUES

Incisions
Excisions
Vaporisations

3 OPERATING MODES

CW
Pulse
SuperPulse

3 EXPOSURE MODES

Continuous
Single pulse
Repeat pulse

APPLICATIONS

Operculation,
Gum Peeling,
Desensitization, Coagulation,
Vasodilatation,
Uncovering of Implants,
Peri-Implantitis, periodontal pocket treatment,
Pulp Capping, Root Canal Sterilization,
Crown Lengthening...

The compensated articulated arm is initially positioned vertically. The 635 nm directional diode spot allows perfect aiming of the CO2 beam on the operating site.

It is a very light system which is articulated due to 7 elements composed with mirrors.

The CO2 laser is remarkably manoeuvrable, at hand and very flexible.

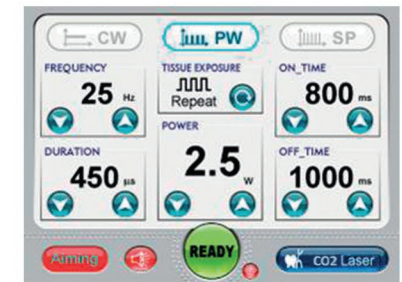
The user interface, a colored touch screen control panel, is used to check all the operating functions and allows to have a total and permanent control in real time.

The messages on the screen guide the user at each step of the operation and makes the CO2 laser an extremely safe & easy-to-use device.

The CO2 laser accessories have been designed to assist you by ensuring reliability, precision & safety.

The CO2 laser is a system controlled by a sophisticated microprocessor using mainly the CO2 providing a power up to 30 W on the tissues.

The system includes the CO2 laser tube in the principal body of the device, the articulated arm delivering the beam and the accessories. The emission is controlled with the footswitch.



Optional :



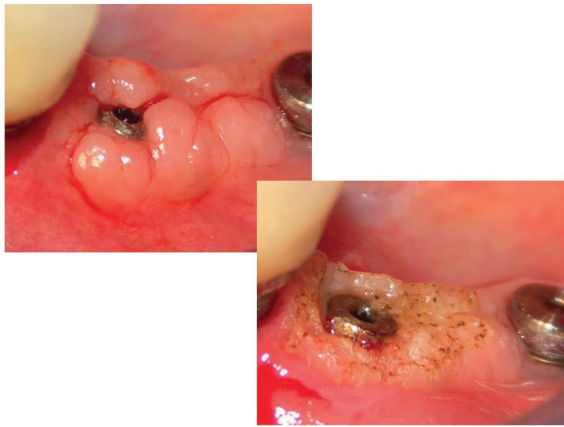
FEATURES

LASER TYPE	30W SUPER PULSE EXPERT CO2 LASER
Wavelength	10 600 nanomètres
Power	0,5 to 30W (Watts)
Operative Mode	CW – Pulse – SuperPulse (400 W)
Frequency	SuperPulse = 1 – 500 Hz
Exposure time	10 – 1000 μs
User Interface	Color Liquid Crystal Display - Touch screen
Articulated arm	7 joint spring balances articulated arm
Aiming beam	3mW (650nm diode), adjustable

Published in the journal "La Lettre de la Stomatologie" discover Dr Fromental's article:
The medical CO2 laser - the power of focused light
Application to peri-implant soft tissues

Contact us at : contact@espace14-dental.com and received the publication

PERI-IMPLANT GUM PEELING



EMERGENCE PROFILE CREATION



TIGHTNESS RELEASED



BIOSTIMULATION



PARODONTITIS TREATMENT



ESPACE 14 IS THERE FOR YOU

From installation to daily used : clinical videos, scientifics publications, advise, training

Our practitionners experts network is at your disposal to answer all your questions