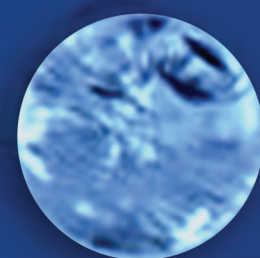


PERFORMANCE, SAFETY, EFFICIENCY



## DENTAL PUTTY

Ready-to-use injectable biomaterial



DENTAL GROUP



# DENTAL PUTTY

Ready-to-use injectable biomaterial



## ADVANTAGES

- Easy to use
- Easily positionable and moldable
- Strong adhesion to bone
- Maintains its defined shape
- Accelerates bone formation (within 3–4 months)
- Fully resorbable and synchronized with bone regeneration
- Does not require the use of a collagen membrane
- Osteoconductive and osteoinductive: guides the healing process of both hard and soft tissues
- Available in 3 volumes (prevents waste)



COMPOSITION  
B-TCP enriched with silicate



List of scientific publications available upon request



REFERENCES	VOLUMES
PDP030	0,3 cc
PDP050	0,5 cc
PDP100	1 cc

## INDICATIONS

Sinus lift grafts via lateral and crestal approaches

Alveolar ridge preservation

"Bio-Active Shield" Creation®

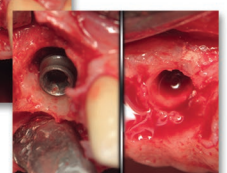
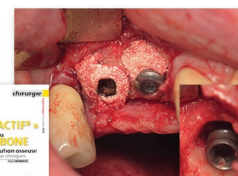
Guided Bone Regeneration (GBR)

Correction of bone defects

...

## BIO-ACTIVE SHIELD®

Featured in the "Implantologie" journal, November 2010 edition: discover the concept of the "Bio-Active Shield" by Dr. R. Fromental – contact us for more information

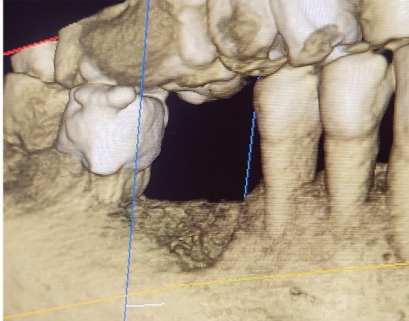




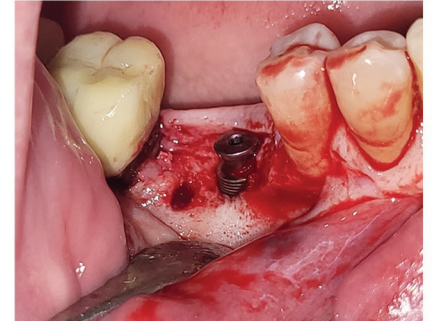
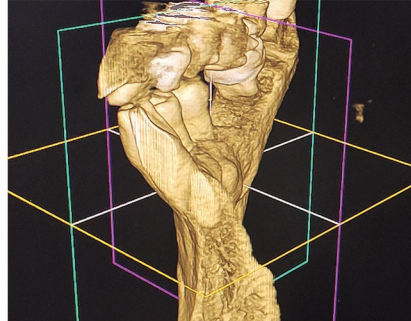
## CLINICAL CASE

### Patient presentation

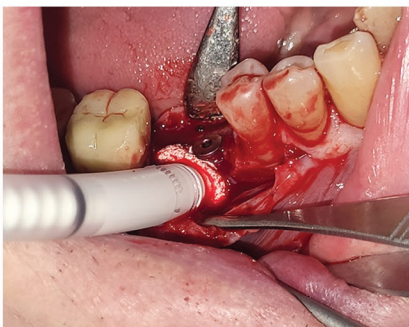
- Male, 77 years old, with no relevant medical conditions or known allergies.
- Implant placement in site 46 following tooth extraction (due to periodontal issues).
- 3 months post-extraction: decision to place an Access implant Ø5 L8. Cone Beam imaging reveals a significant buccal bone defect.



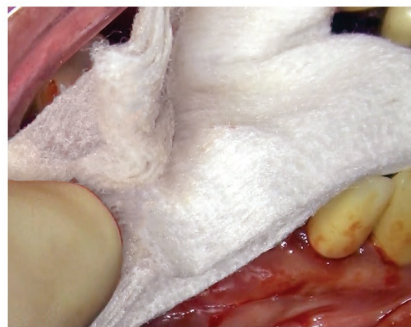
CT scan showing the bone defect



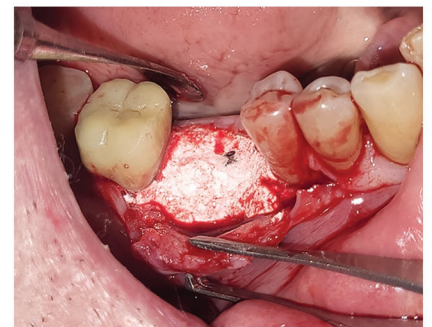
Sub-crestal positioning of the implant collar and placement of a 2 mm healing screw for biological management of the "Bone Tunnel"



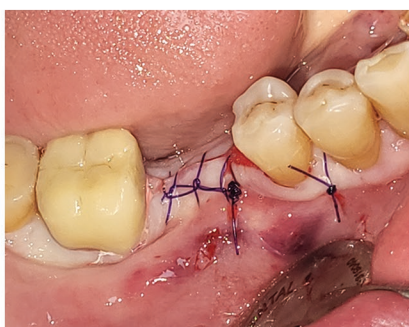
Application of DENTAL PUTTY biomaterial



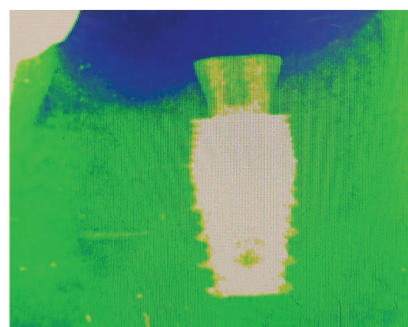
Manual shaping of the DENTAL PUTTY and gentle pressure applied using a dry gauze



DENTAL PUTTY in place



Sutures demonstrating the hermetic sealing of the post-implantation site



4-month follow-up radiograph before prosthetic restoration (noting bone stabilization on the mesial and distal sides, as well as bone apposition along the implant neck - Platform Switching)



Powerbone Biomaterials Co. is one of the world's first companies capable of producing synthetic osteoinductive and osteoconductive materials for bone grafts, membranes, bone cement, and cartilage grafts.

Operating under a TS EN ISO 13485 quality management system, all products are CE-certified as Class III medical devices, ensuring the highest level of safety standards throughout the production process.



DENTAL GROUP

**Espace 14 it's...**

### ACCESS IMPLANTS

The -Made in Germany- Access implant system integrated the latest digital technologies (Exocad, 3Shape, Realguide, etc.)



CE  
ISO  
13485

**Espace 14 it's also...**



The Hyaluron



Actilink  
Plasma Activator



Instrumentations



Piezo Surgery  
motors



G.B.R



Co2 / Diode lasers

## TRAINING

Espace 14 has established a partnership with KCF Paris, a leading provider of dental education.



International Master's programs, tailored clinical coaching, short courses lasting 1 to 3 days on various topics (with or without official accreditation in France), and one-week clinical coaching programs in international clinics...

KCF offers training in oral implantology and dental innovation, tailored to the needs of professionals, with programs designed to help you deepen your skills and stay up to date with the latest techniques.

ESPACE 14

14 Place Jules Ferry  
69006 Lyon - France

[www.espace14-dental.com](http://www.espace14-dental.com)

Informations and contacts

Tel : 0033 (0)4 37 24 32 41  
Tel : 0033 (0)6 28 68 07 02

[contact@espace14-dental.com](mailto:contact@espace14-dental.com)