

INFRA BONE LEVEL

A  
IMPLANTS



## INFRA BONE LEVEL

In the range of medical devices adapted to implantology, the "Infra Bone Level" implant offers all the therapeutic possibilities in the treatment of single or multiple edentulism, from anterior zones (optimization of aesthetics) to posterior zones.

Due to the quality (German manufacturing) of its design, its surface treatment (SLA), its connectivity, it allows optimized hard tissue and soft tissue integration while respecting biological requirements.

Its affordable cost makes this implant a major tool for implant-supported prosthetic rehabilitation.



ISO  
13485

The "Infra Bone Level" is an implant system designed and distributed by ESPACE 14 (Lyon - France)



DENTAL GROUP

[www.espace14-dental.com](http://www.espace14-dental.com)



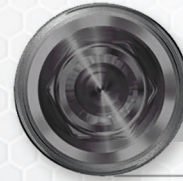
INFRA BONE LEVEL



# INFRA BONE LEVEL

## Indexed conical connection

Same connection for all diameters



SAME CONNECTION FOR ALL DIAMETER

2.1 mm

## Platform Switching

Narrow implant neck preventing compression in cortical layer  
(in the case of a juxta-bone level placement)

## Micro thread

In order to increase BIC (Bone Implant Contact)

## Intermediate thread

Bone thread on the corticospongoid level

## Grade IV Titanium

For a higher compatibility with bone

## Active thread

Has multiple levels of height, which allows enlarging the contact surface of the implant with the bone  
Allows achieving reliable initial stability in soft bone

## Implant body

Conical Shape

The shape of an implant matches completely the drill

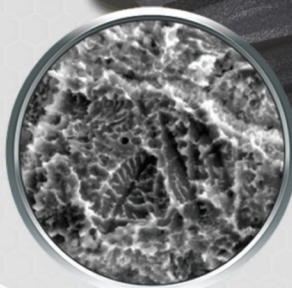
High initial stability

## SURFACE SLA-AHS

The possibility of applying early or immediate load on the implant

Reliable connection with bone

Faster bone formation on the surface of the implant



## Apical part

Atraumatic apex



## RANGE

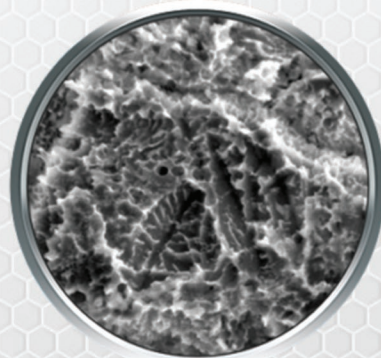
## LENGTHS

Ø 3.30			10mm	11.5mm
Ø 3.75		8mm	10mm	11.5mm
Ø 4.20	6mm	8mm	10mm	11.5mm
Ø 5	6mm	8mm	10mm	11.5mm



# HYDROPHILIC SURFACE

## SLA-AHS\*: THE HIGH PERFORMANCE IMPLANT SURFACE



The SLA surface condition represents the new generation of implant surface. The resulting nanostructure of the SLA process provides **an ideal surface for cell attachment and bone integration** during healing.

Numerous clinical and preclinical studies have confirmed the **long-term performance and reliability** of the implants.

The SLA surface **improves the integration** of the implant into the bone tissue, thus accelerating the healing time.

Recent studies have shown the **excellent clinical performance** of SLA implants, even in the most difficult treatment protocols.

\*AHS = Active Hydrophilic Surface

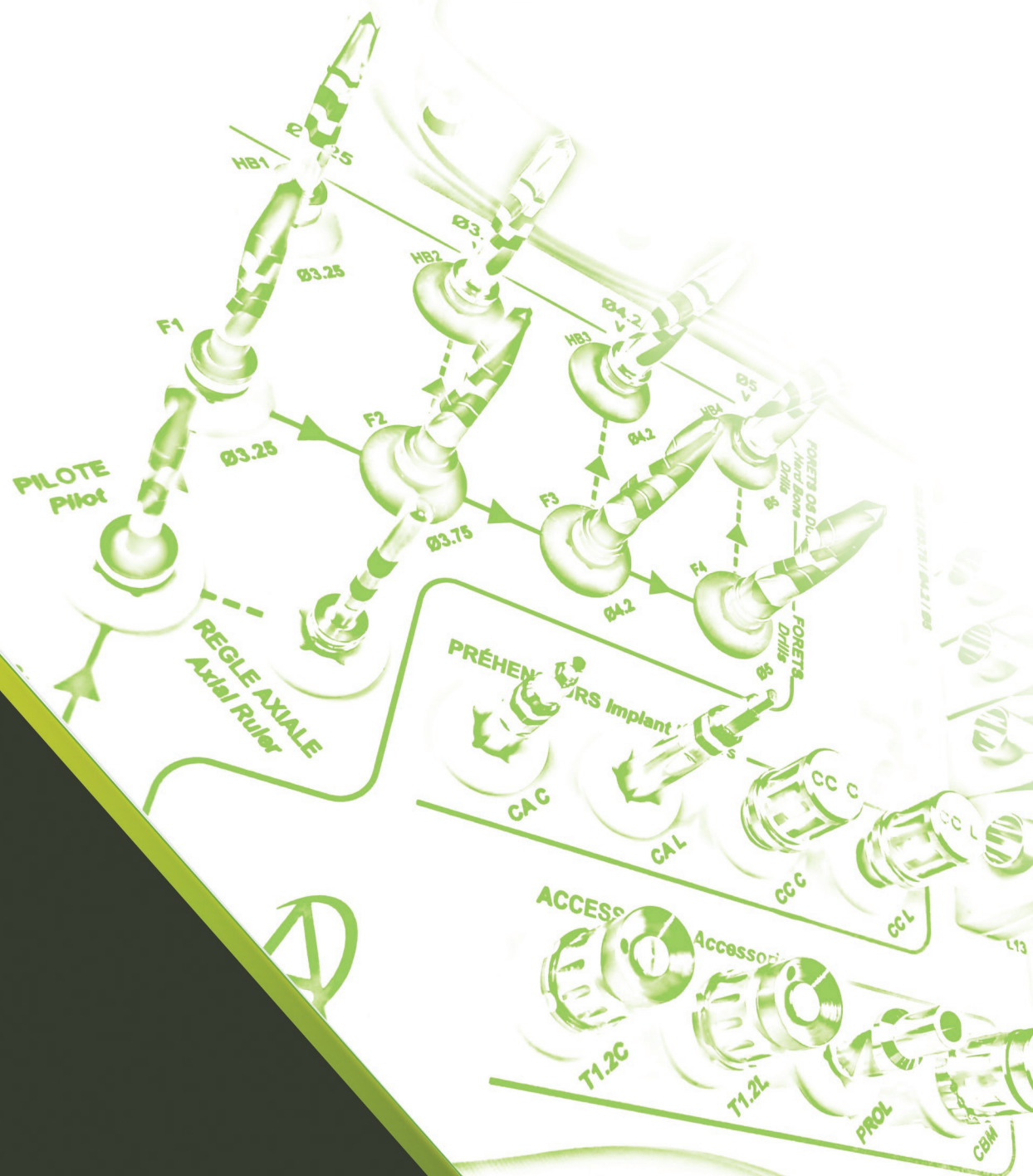
### ADVANTAGES OF ACTIVE HYDROPHILIC SURFACE :

- The possibility of early or immediate loading implant
- Better osseointegration
- Faster bone formation on the surface of the implant

The importance of wettability is related to the need to deliver blood components to the surface, allowing rapid formation of bone structure around the implant. The fluid around the implant retains the properties of active hydrophilicity.



**A SIMPLE EFFICIENT  
AND SECURE PACKAGING**



# INSTRUMENTS



## SURGICAL KIT

SIMPLE

INTUITIVE

OPTIMIZED

EFFICIENT





# INSTRUMENTS

## PROSTHETIC KIT simplicity and rationality



## ANCILLARIES

Manual Screwdriver

Screwdriver on Contra-angle

Multi Lock Key

Torque wrench



T1.25C

T1.25L

T1.25CAL

T1.25CAC\*

\*option

CBM

CCD

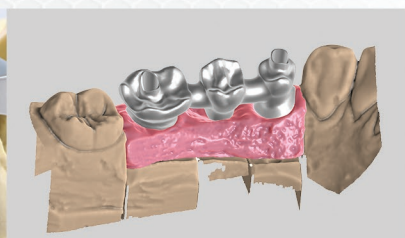
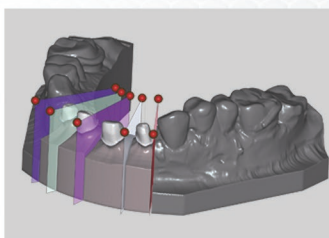
## CAD/CAM

### EXOCAD

### 3D SHAPE

### EXOPLAN

### REALGUIDE



Libraries for Cad/Cam are available upon request



# PROSTHETIC RANGE

- ◆ HEALING SCREWS
- ◆ SEALED PROSTHESIS
- ◆ PLURAL PROSTHESIS
- ◆ DIGITAL PROSTHESIS
- ◆ REMOVABLE PROSTHESIS



# HEALING SCREWS



**Ø 4.2**

AHCK 3/2  
AHCK 3/3  
AHCK 3/4  
AHCK 3/5

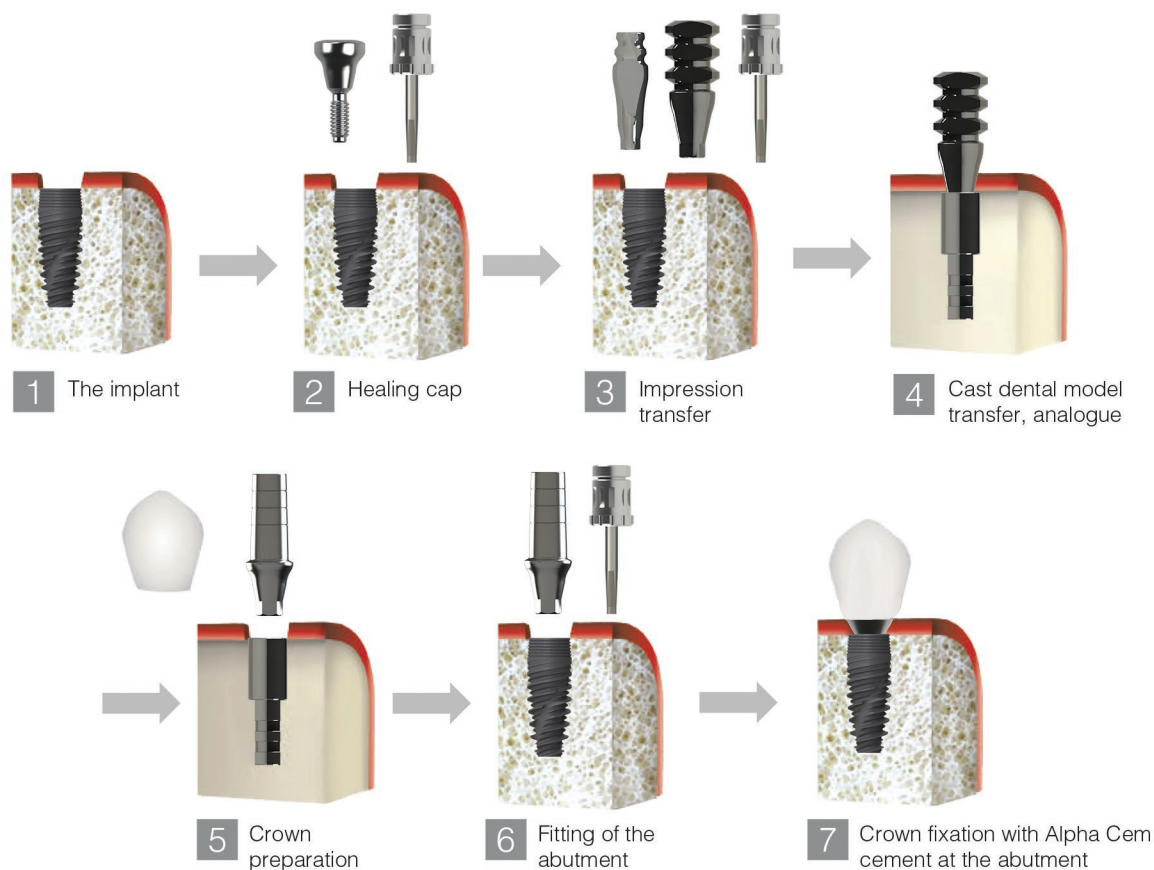
HEALING CAP H.2.5 Ø 4.2  
HEALING CAP H.3.5 Ø 4.2  
HEALING CAP H.4.5 Ø 4.2  
HEALING CAP H.5.5 Ø 4.2



**Ø 5.5**

AHCWK 3/2  
AHCWK 3/3  
AHCWK 3/4  
AHCWK 3/5

WIDE HEALING CAP H.2.5 Ø 5.5  
WIDE HEALING CAP H.3.5 Ø 5.5  
WIDE HEALING CAP H.4.5 Ø 5.5  
WIDE HEALING CAP H.5.5 Ø 5.5



SEALED PROSTHESIS SYNOPSIS



## TRANSFERS AND ANALOG



ATCK3/13  
ATCK3/15  
ATCK3/9

PICK UP TRANSFER  
LONG PICK UP TRANSFER  
POP UP TRANSFER



ANK3

IMPLANT REPLICA

## ABUTMENTS



ATAK 3 9

TITANIUM ANTIROTATIONAL ABUTMENT H.9



ATAK3/001  
ATAK3/002  
ATAK3/003

ANATOMICAL TITANIUM SHOULDER ABUTMENT H.1.5  
ANATOMICAL TITANIUM SHOULDER ABUTMENT H.2.5  
ANATOMICAL TITANIUM SHOULDER ABUTMENT H.3.5



ATAWK3/001  
ATAWK3/002  
ATAWK3/003

ANATOMICAL TITANIUM SHOULDER WIDE ABUTMENT H.1.5  
ANATOMICAL TITANIUM SHOULDER WIDE ABUTMENT H.2.5  
ANATOMICAL TITANIUM SHOULDER WIDE ABUTMENT H.3.5



ATAAK3/015

ANTIROTATIONAL TITANIUM ANGULAR ABUTMENT 15°



ATAAK3/01501  
ATAAK3/01502  
ATAAK3/01503

ANATOMICAL ANGULAR TITANIUM ABUTMENT 15° H.1.5  
ANATOMICAL ANGULAR TITANIUM ABUTMENT 15° H.2.5  
ANATOMICAL ANGULAR TITANIUM ABUTMENT 15° H.3.5



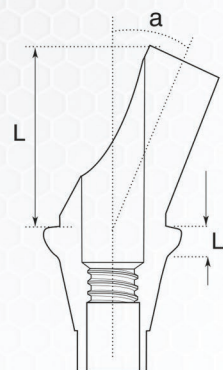
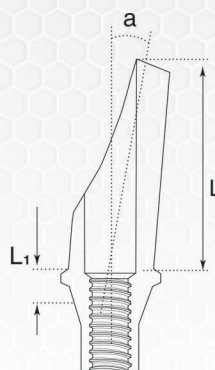
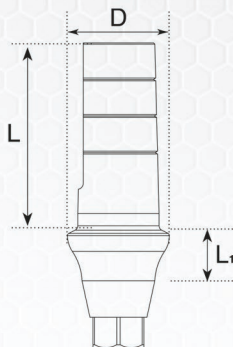
ATAAK3/025  
ATAAK3/02502

ANGULAR ANTIROTATIONAL TITANIUM ABUTMENT 25° H.0  
ANGULAR ANTIROTATIONAL TITANIUM ABUTMENT 25° H.2.5



AAS

ABUTMENT SCREW





AAEAK3/001+  
AAEAK3/002+  
AAEAK3/003+

AESTHETIC STRAIGHT MULTI-UNIT H1.5  
AESTHETIC STRAIGHT MULTI-UNIT H2.5  
AESTHETIC STRAIGHT MULTI-UNIT H3.5



AMUBK3/1701  
AMUBK3/1702  
AMUBK3/1703

ONE-PIECE ANGULAR MULTI-UNIT 17° H.1.5  
ONE-PIECE ANGULAR MULTI-UNIT 17° H.2.5  
ONE-PIECE ANGULAR MULTI-UNIT 17° H.3.5



AMUBK3/3001  
AMUBK3/3002  
AMUBK3/3003

ONE-PIECE ANGULAR MULTI-UNIT 30° H.1.5  
ONE-PIECE ANGULAR MULTI-UNIT 30° H.2.5  
ONE-PIECE ANGULAR MULTI-UNIT 30° H.3.5



AHCAEM

HEALING CAP FOR MULTI PILAR



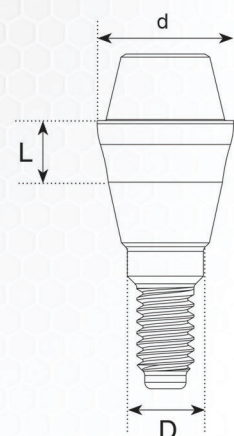
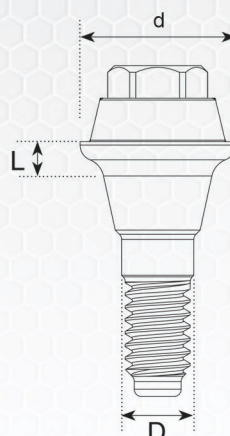
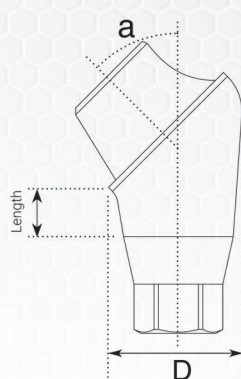
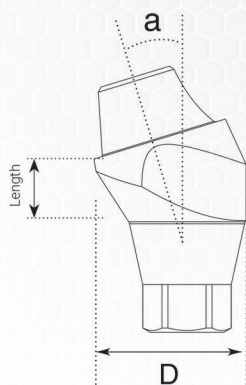
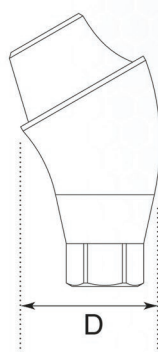
APMM  
ATSAAM

MULTI UNIT BURNOUT SLEEVE  
MULTI UNIT TEMPORARY TITANIUM SLEEVE

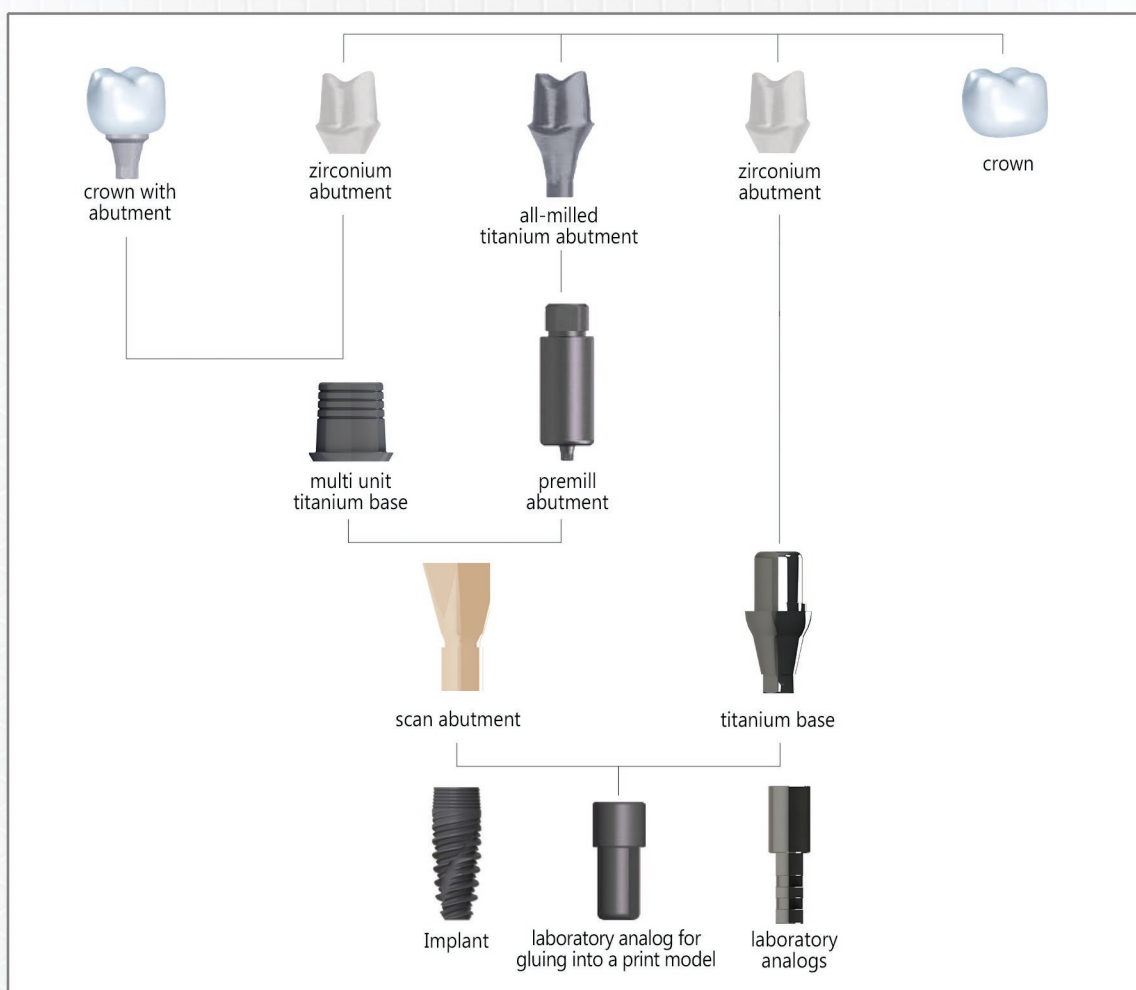


APCAEK  
AANA EK

MULTI UNIT PICK UP TRANSFER  
MULTI UNIT IMPLANT REPLICA







## DIRECT IMPLANT DIGITAL PROSTHESIS



AATN-TI  
AATN9-TI

DIRECT IMPLANT BODY SCAN  
NARROW DIRECT IMPLANT BODY SCAN



ATPCK3  
ATPCK3/1  
ATPCK3/2  
ATPCK3/3

ANTIROTATIONAL TITANIUM BASE H.1.5  
ANTIROTATIONAL TITANIUM BASE H.2  
ANTIROTATIONAL TITANIUM BASE H.3  
ANTIROTATIONAL TITANIUM BASE H.4



AD-ANK3

DIRECT IMPLANT DIGITAL REPLICA

## MULTI UNIT DIGITAL PROSTHESIS



AAT-MU

MULTI UNIT BODY SCAN



AD-ANAEM

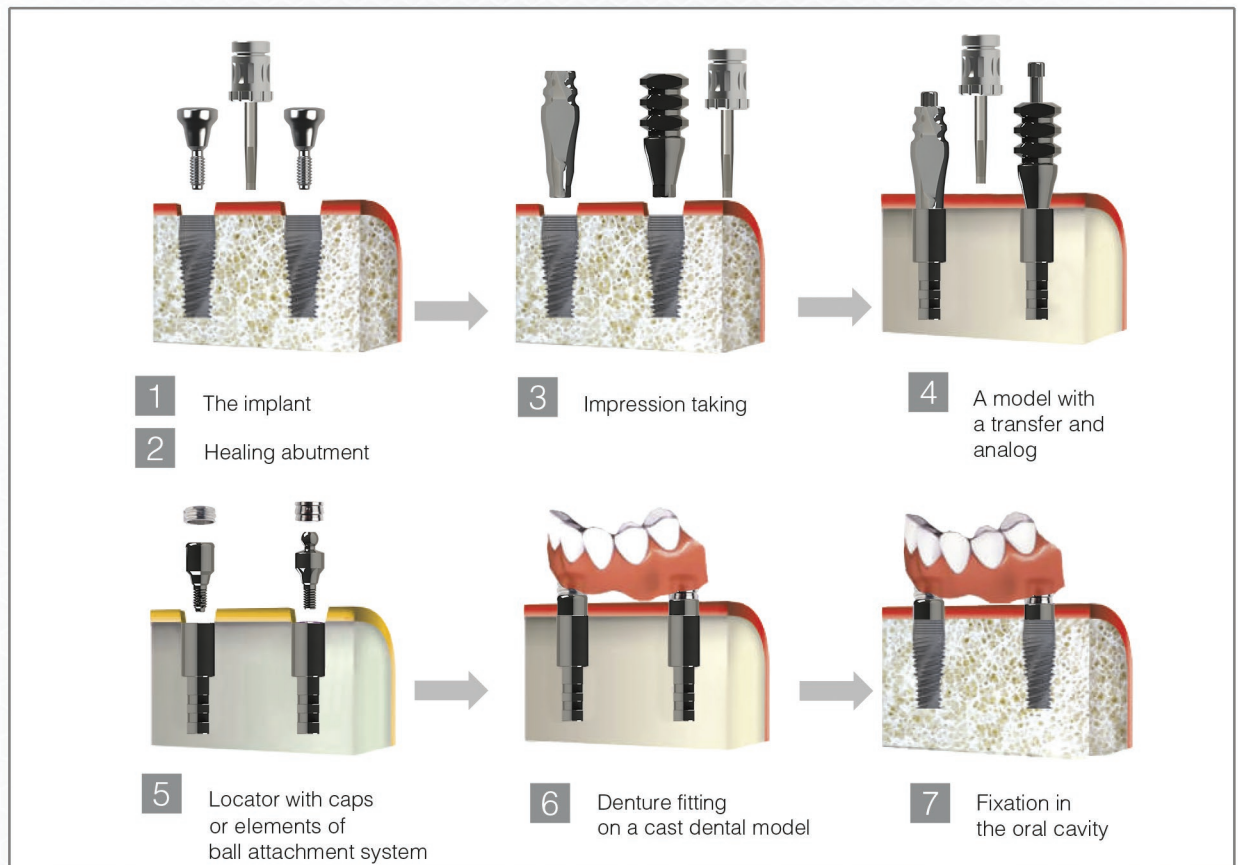
MULTI UNIT DIGITAL IMPLANT REPLICA



ATPC-MU

MULTI UNIT TITANIUM BASE





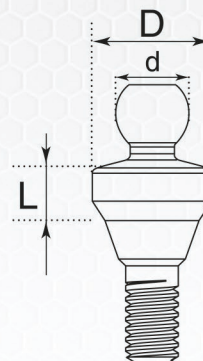
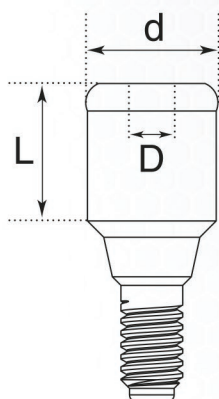
ALCK3/2  
ALCK3/3  
ALCK3/4  
ALCK3/5  
ALCK3/6

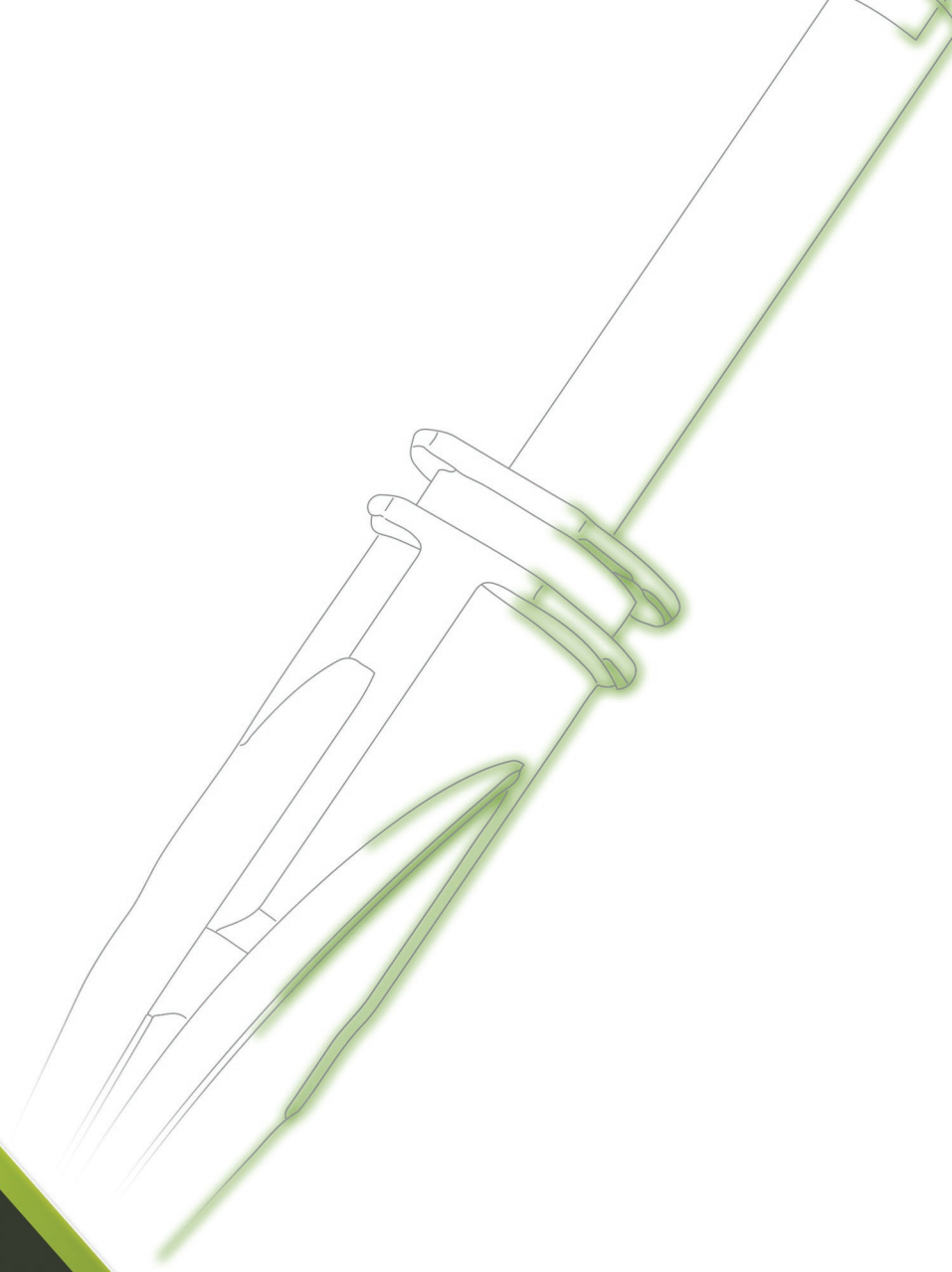
LOCATORS H.2  
LOCATORS H.3  
LOCATORS H.4  
LOCATORS H.5  
LOCATORS H.6



ABAK3/2  
ABAK3/3  
ABAK3/4  
ABAK3/5  
ABAK3/6

BALL ATTACHMENT H.2  
BALL ATTACHMENT H.3  
BALL ATTACHMENT H.4  
BALL ATTACHMENT H.5  
BALL ATTACHMENT H.6

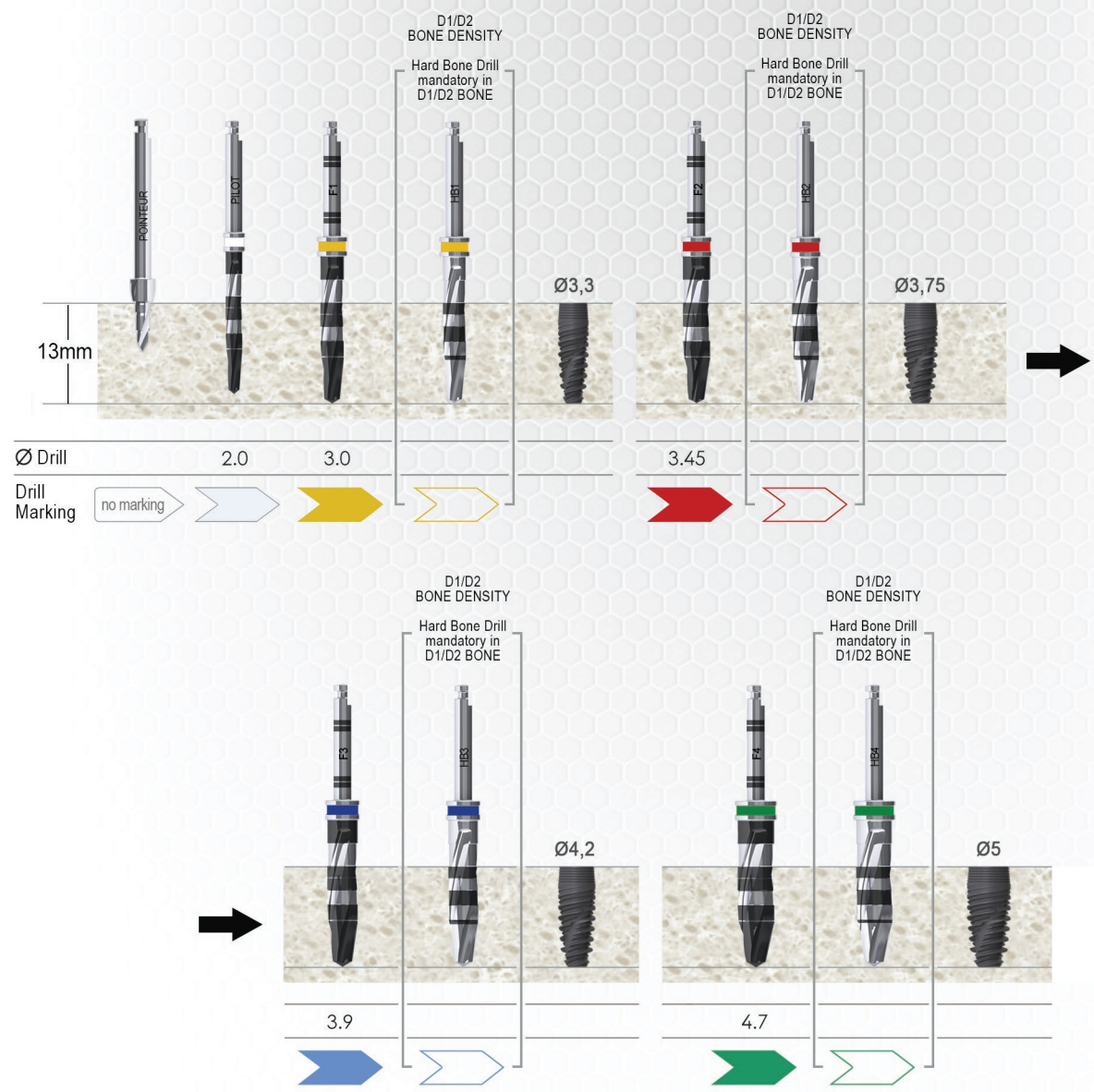




# SURGICAL GUIDE



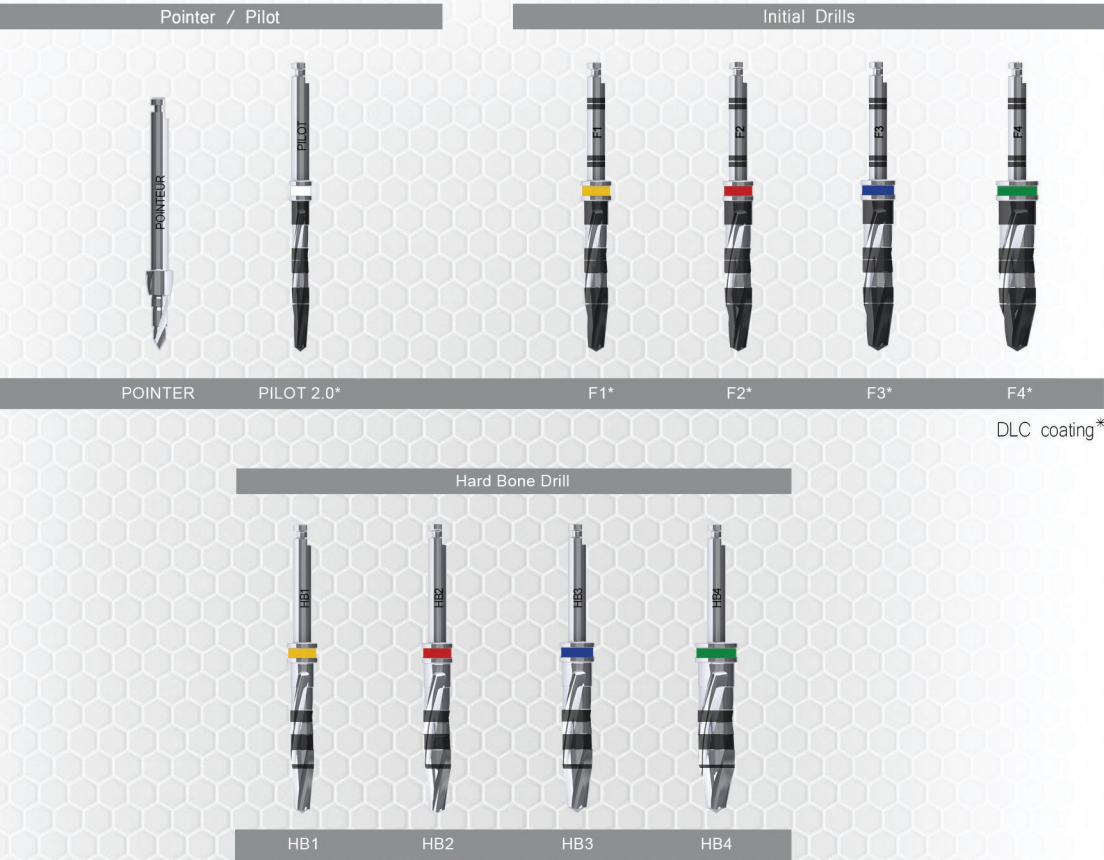
# SURGICAL KIT



# SURGICAL PROCEDURES



DRILLS



STOPPERS

For all drills



Drill extension



Ratchet



IMPLANT DRIVERS



ACCESSORIES

Screwdrivers

Direction indicator /depth gauge

Multi locking key





DENTAL GROUP

ESPACE 14 is also a set of materials allowing you to respond to all needs related to the practice of dental implantology



**CO2 LASER / DIODE LASER**



**IMPLANTOLOGY MOTORS  
PIEZOSURGERY MOTORS**



**BIOMATERIALS**  
Bone fillings / Membranes



**PRF TECHNOLOGY**



**CONTRA-ANGLES**



## TRAINING KCF - ACCA LEARNING



Espace 14 is a partner of KCF-ACCA LEARNING and thus joins the ACCA LEARNING Group which has been offering high-quality training to dental professionals around the world since 1995. Operating in over 20 countries on 4 continents, ACCA Learning offers courses and training programs for dentists, orthodontists, dental hygienists and other dental professionals.



KCF-ACCA LEARNING it's :

- Theoretical and practical training for beginner practitioners
- Tailored clinical coaching (from beginner to specialist)
- Short courses, 1 to 3 days, on various topics (with or without certification): Sinus Lift / Guided Bone Regeneration / Laser / Zirconia Implantology... (France)
- One-week clinical coaching programs at an international faculty (FACOP - Brazil)
- Interactive AI-driven training sessions

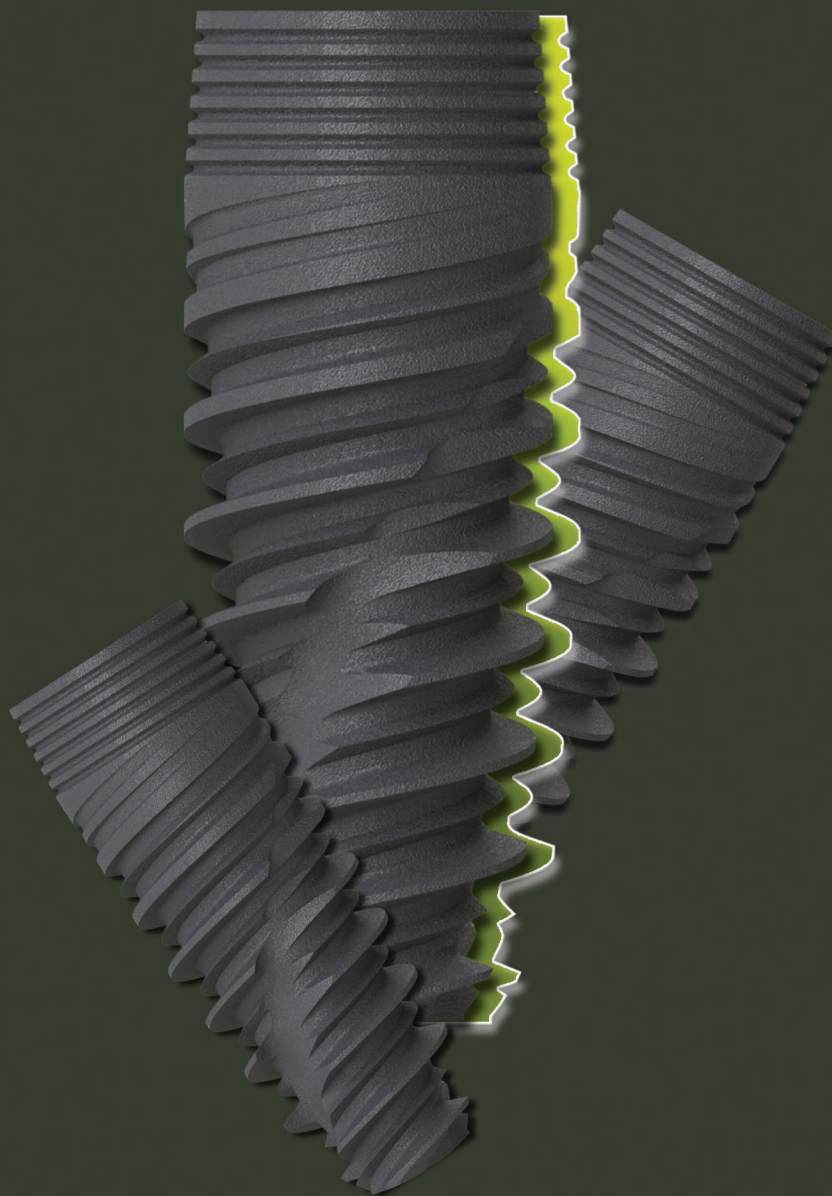


Our team of high-level teachers is at your disposal to perfect your development.

**"Wisdom.... comes not from age, but from education and learning"**

A.C

Informations and contact : [www.kcflearning.com](http://www.kcflearning.com)



CE  
ISO 13485

ESPIACC-PASS01\_rev00\_04/2024



ESPACE 14  
Conceptor and Distributor

14 Place Jules Ferry  
69006 Lyon - France

[www.espace14-dental.com](http://www.espace14-dental.com)

Informations and contact  
Tel : 0033 (0)4 37 24 32 41  
Tel : 0033 (0)6 28 68 07 02

[contact@espace14-dental.com](mailto:contact@espace14-dental.com)